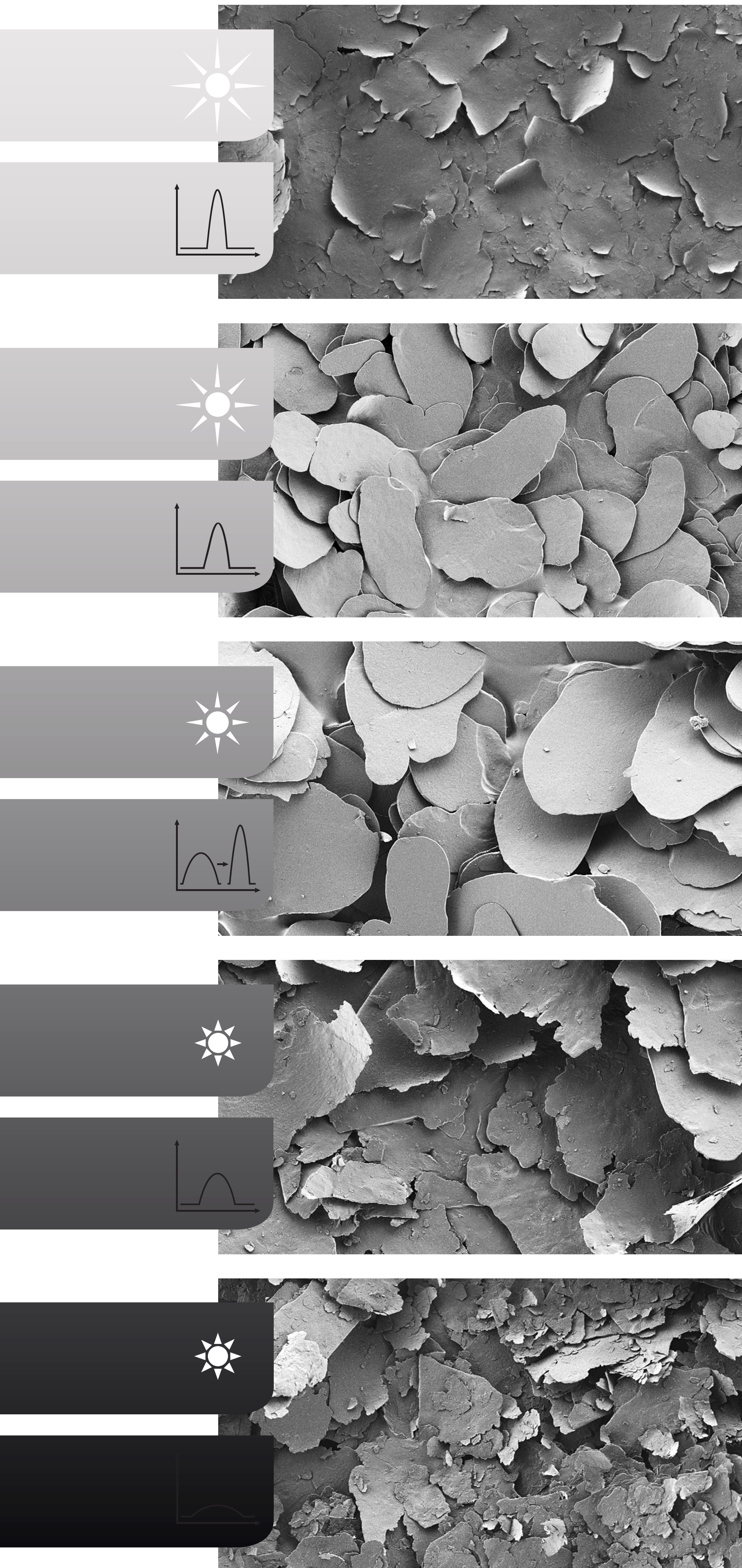


# 铝颜料规格性能分布图 / Aluminum Pigment Chart

铝颜料金属效果一览 / Overview of the current aluminum pigments covering the entire metallic effect range



## SILVERSHINE®

SILVERSHINE S 系列 极亮, 极强金属效果, 完美遮盖力。  
SILVERSHINE 400 系列 几乎无光漫射, 和有机颜料配合使用时仍具有强烈金属效果。

SILVERSHINE S Series Extremely bright, metallic optical effect and ideal hiding power.  
SILVERSHINE 400 Series Nearly no scattering properties, metallic character also when tinted with organic pigments.

型号/Type	平均粒径/Average particle size 检测仪器 Helios / determined with Helios 约 D50 µm / approx. D50 µm	颗粒厚度 / Particle thickness	随角异色 指数 / Flop index	非挥发物含量 / Non-volatile content %	溶剂 / Solvents
SILVERSHINE S 1100	11	50	28	30	TE / SA
SILVERSHINE S 1500	16	40	29	25	PM
SILVERSHINE S 2100	24	80	28	50	TE / SA
SILVERSHINE 412	14	80	31	60	TE / SA
SILVERSHINE 418	22	80	29	70	TE / SA
SILVERSHINE 422	26	80	25	70	TE / SA

## STAPA® METALLUX

STAPA® METALLUX 3000 / STAPA® METALLUX 4000  
极窄粒径分布, 优秀金属感和色纯度。

STAPA® METALLUX 3000 / STAPA® METALLUX 4000 Very narrow particle size distribution, excellent brilliance and colour purity.

型号/Type	平均粒径/Average particle size 检测仪器 Helios / determined with Helios 约 D50 µm / approx. D50 µm	随角异色指数 / Flop index	非挥发物含量 / Non-volatile content %	溶剂 / Solvents
STAPA METALLUX 3540	20	28	70	TE / SA
STAPA METALLUX 3560	18	25	72	TE / SA
STAPA METALLUX 3580	14	23	60	TE / SA
STAPA METALLUX 3590	13	22	60	TE / SA
STAPA METALLUX 4030	16	22,5	65	TE / SA
STAPA METALLUX 4060	12	21	60	TE / SA

## STAPA® METALLUX

STAPA® METALLUX 200 粗闪系列, 极窄粒径分布, 清晰色调, 闪炼效果。  
STAPA® METALLUX 1000 兼具高着色力, 强遮盖力及闪炼效果, 金属感强。

STAPA® METALLUX 200 Coarse sparkle types, very narrow particle size distribution, for clear shades with sparkle effect.  
STAPA® METALLUX 1000 Tinting strength/coverage and sparkle effect in one pigment, high brilliance.

型号/Type	平均粒径/Average particle size 检测仪器 Helios / determined with Helios 约 D50 µm / approx. D50 µm	随角异色指数 / Flop index	非挥发物含量 / Non-volatile content %	溶剂 / Solvents
STAPA METALLUX 1520	35	26	70	TE / SA
STAPA METALLUX 1540	26	24	70	TE / SA
STAPA METALLUX 1560	17	22	70	TE / SA
STAPA METALLUX 1580	12	20	70	TE / SA
STAPA METALLUX 2153	26	25	70	TE / SA
STAPA METALLUX 2154	21	24,5	70	TE / SA
STAPA METALLUX 2156	20	24	70	TE / SA
STAPA METALLUX 2192	17	23	70	TE / SA
STAPA METALLUX 2195	14	19	65	TE / SA
STAPA METALLUX 1071	23	25	65	TE / SA
STAPA METALLUX 214	36	26	70	TE / SA
STAPA METALLUX 212	54	28	70	TE / SA

## STAPA® MOBILUX STAPA® METALLUX

STAPA® MOBILUX 较窄粒径分布, 高色纯度, 清晰色调。  
STAPA® METALLUX 600 较宽粒径分布, 细颗粒, 极佳遮盖力, 细粒径型号 (618/814) 呈灰相。  
STAPA® METALLUX 8000 细粒径, 狭窄粒径分布, 清晰色调。  
STAPA® METALLUX 9000 "丝光型", 极亮, 细粒径, 低随角异色性, 丝光, 亮白色相。  
STAPA® METALLUX 700 适用于罐听涂料及卷钢涂料

STAPA® MOBILUX Narrower particle size distribution, high colour purity, for clear shades.  
STAPA® METALLUX 600 Relatively wide particle size distribution, fine, very good coverage, grey in fine range (618/814).  
STAPA® METALLUX 8000 Fine, narrow particle size distribution, for clear shades.  
STAPA® METALLUX 9000 "Silky glossy types", very bright and fine, low flop for silk gloss, bright shades.  
STAPA® METALLUX 700 Aluminum pigment pastes for can and coil coating

型号/Type	平均粒径/Average particle size 检测仪器 Helios / determined with Helios 约 D50 µm / approx. D50 µm	随角异色指数 / Flop index	非挥发物含量 / Non-volatile content %	溶剂 / Solvents
STAPA MOBILUX 151	38	17	65	TE / SA
STAPA MOBILUX 161	29	16,5	65	TE / SA
STAPA METALLUX 618	15	13	65	TE / SA
STAPA METALLUX 8154	22	16,5	65	TE / SA
STAPA METALLUX 9157	23	15,5	65	TE / SA
STAPA METALLUX 9160	15	11	65	TE / SA
STAPA METALLUX 730CC	35	17	65	TE / SA

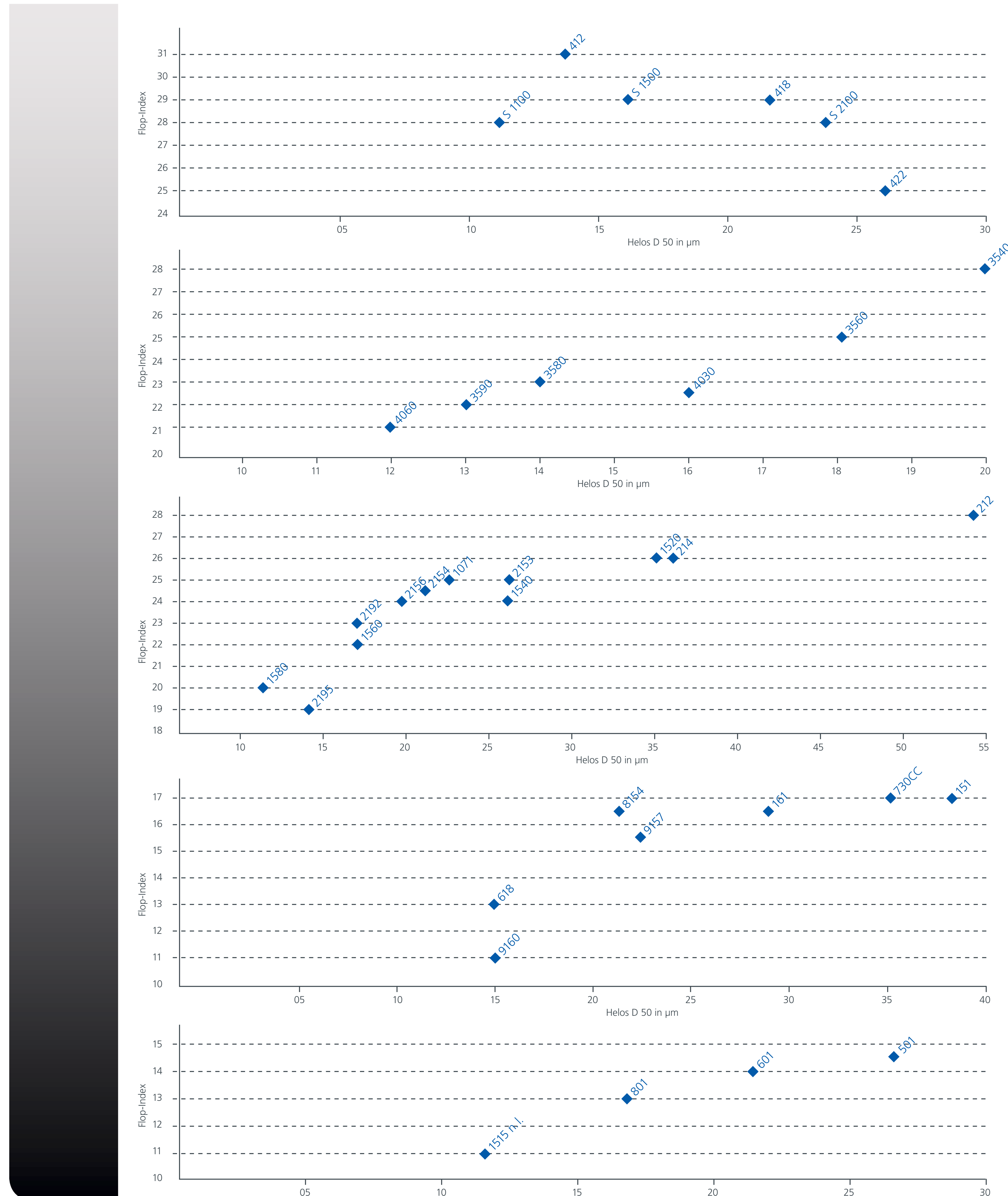
## STAPA® 1515 n.l. STAPA® METALLIC

STAPA® METALLIC 宽广粒径分布, 高遮盖力, 强色泽, 细粒径规格 (701R/707, 801R/807) 略呈灰相。  
STAPA® METALLIC Wide particle size distribution, good coverage, intensive colour, slightly grey especially in the fine range (701R/707, 801R/807).

型号/Type	平均粒径/Average particle size 检测仪器 Helios / determined with Helios 约 D50 µm / approx. D50 µm	随角异色指数 / Flop index	非挥发物含量 / Non-volatile content %	溶剂 / Solvents
STAPA 1515 n.l.	12	11	65	TE / SA
STAPA METALLIC 501	27	14,5	65	TE / SA
STAPA METALLIC 601	22	14	65	TE / SA
STAPA METALLIC 801	17	13	65	TE / SA

TE = 200#溶剂汽油 / Mineral spirit  
SA = 石脑油溶剂 / Solvent naphtha  
PM = 丙二酮甲醚 / Methanoxo preparol

0.3/March2018.0 CO PRC  
023737XX0



随角异色指数是一个用于描述某种物料对光的两个不同反射角度的明暗区别的视觉印象, 其与 CIE Lab 的 L\* 值关联, 是一种可度量参数。  
The so-called flop index is used as the measurable parameter that describes the visual impression of the material correlating with CIE Lab lightness L\* between two different specular angles. (brightness flop):

$$\text{随角异色指数} / \text{Flop Index} = \frac{2.69 (L^*_{15^\circ} - L^*_{110^\circ})^{1.11}}{(L^*_{45^\circ})^{0.86}}$$

\* = 高 / high \* = 低 / low = 亮度/金属光泽 / brightness/metallic shine  
| | = 高 / high | | = 低 / low = 粒径 (分布) / particle size (distribution)

A member of ALTANA

